

Individual Spec Sheet

LOW VOLTAGE LED PUCK LIGHTS

LED UNDERCABINET LUMINAIRE

12 V

ORDERING INFORMATION

Order code: 67177
Model number: UCP/KIT3/12V/2.2W/30K/FR/BN/STD
UPC: 069549671775
Case quantity: 30

PHYSICAL DATA

Type: LED Puck Light - kit of 3 units
Size in. (mm): 3 (75.4)
Shape: Round
Finish: Brushed Nickel
Lens finish: Frosted
Mounting: Surface and Recessed
Wire Length in (mm): 39 3/4 (1 010)
Wire gauge (AWG): 22
Daisy chain installation: Up to 15 pucks can be connected with a maximum of 5 pucks per HUB entry (see Installation Instructions for more details)

PERFORMANCE DATA

Watts (W): 2.2
Volts (V DC): 12
Color temp. (K): 3 000
Lumen output (lm): 150
Lumen per Watts (lm/W): 68
CRI: 90
Life L70 (h): 50 000
Beam angle (°): 120
Operating temp. range: -20°C to 40°C (-4°F to 104°F)

¹ Typical color temperature range: +/- 5 %.

² Lumen values are derived from photometric testing. Initial lumens range: +/- 10 %.

³ Life hours are derived from IESNA LM80-08 testing report and projected per IESNA TM-21-11 extrapolations.

INCLUDED IN THE BOX (KITS OF 3 UNITS)



3 x LED pucks in the chosen finish



1 x HUB with 6 entries for pucks



1 x plug-in driver

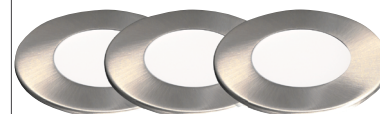
COMPATIBLE DRIVERS

Order code	Description
67184 ¹	LED/DRIVER/12W/12V/PLUG/ND/STD
62265 ^{2,3}	LED/TAPE/36W/12V/WW+CW/PS/ND/STD
65743 ^{2,3}	LED/DRIVER/10W/12V/HW/ND/STD
65744	LED/DRIVER/20W/12V/HW/ND/STD

¹Included in the kits of 3 units.

²Ensure hardwire connections are made in a junction box (junction box not included with driver).

³A wire to DC male connector (66241) is needed to allow hub connection to hardwire driver.



3 yrs
warranty

quick ship



LED
fixture



dimmmable



damp
location



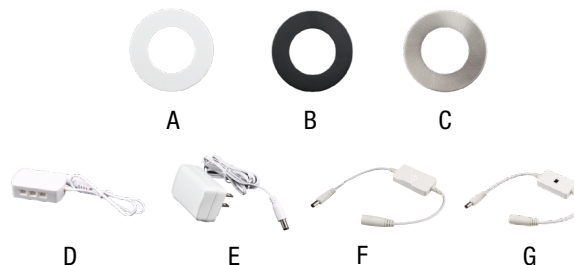
ICES
005



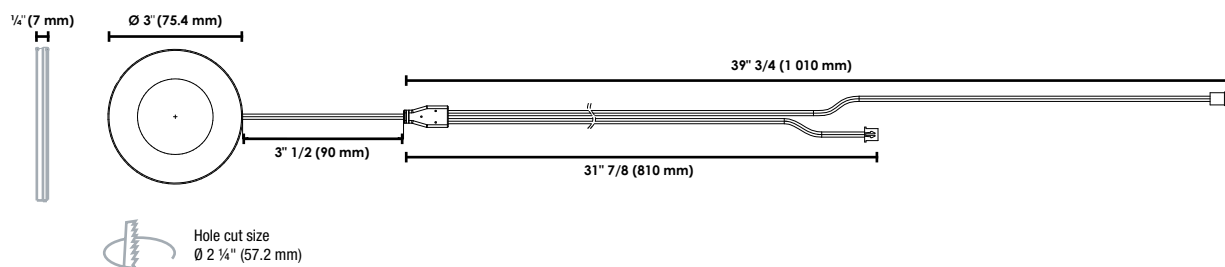
This lighting equipment complies with Canadian standard ICES-005 for use in residential applications.
 Data is based upon tests performed in a controlled environment.
 Actual performance can vary depending on operating conditions. Specifications are subject to change without notice.

ACCESSORIES (TO ORDER SEPARATELY)

Order code	Description	Type	Figure	Case qty (inner/master)
67180	UCP/TRIM/BACKPLATE/WH/STD	White Trim and Backplate	A	50 / 200
67181	UCP/TRIM/BACKPLATE/BLK/STD	Black Trim and Backplate	B	50 / 200
67182	UCP/TRIM/BACKPLATE/BN/STD	Brushed nickel Trim and Backplate	C	50 / 200
67183 ¹	UCP/ACC/HUB6/STD	HUB with 6 entries	D	30 / 120
67184	LED/DRIVER/12W/12V/PLUG/ND/STD	Plug-in driver	E	- / 80
67185	UCP/ACC/DIMMER/STD	ON/OFF and dimming switch	F	30 / 120
67186	UCP/ACC/MOTIONSENSOR/STD	Motion sensor and dimming switch	G	30 / 120

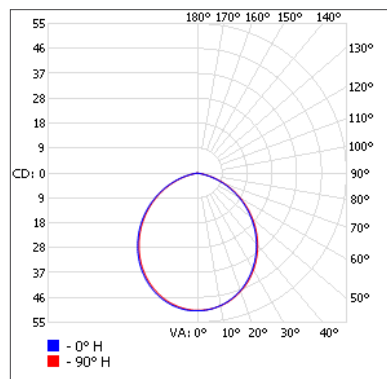
¹ Included in the kits of 3 units.

DIMENSIONS

PHOTOMETRIC DATA²

67177 • UCP/KIT3/12V/2.2W/30K/FR/BN/STD • 2.2 W • 3 000 K • 122.9 lm

Polar candela distribution



Zonal lumen summary

Zone	Lumens	% Fixture
0-30	38.5	31.3%
0-40	62.0	50.4%
0-60	104.8	85.3%
60-90	18.1	14.7%
70-100	5.0	4.1%
90-120	0	0%
0-90	122.9	100%
90-180	0	0%
0-180	122.9	100%

Illuminance at a distance

Center beam fc		Beam width	
1.7'	17.5 fc	4.2'	4.2'
3.3'	4.66 fc	8.1'	8.1'
5.0'	2.03 fc	12.3'	12.3'
6.7'	1.13 fc	16.5'	16.5'
8.3'	0.74 fc	20.5'	20.4'
10.0'	0.51 fc	24.7'	24.6'

Vert. spread: 101.9°
 Horiz. spread: 101.8°

² Complete IES files available on our website.

Qty	Description	Price

I accept the specifications of the luminaire configuration mentioned above.

Name: _____

Company: _____

Signature: _____

Date: _____

Data is based upon tests performed in a controlled environment. Actual performance can vary depending on operating conditions.
 All products are subject to change or may be discontinued any time without notice.