

ORDERING INFORMATION

Order code: 67802
 Description: F14T8/CW/PH/G13/STD
 UPC: 695491678026
 Case quantity: 200

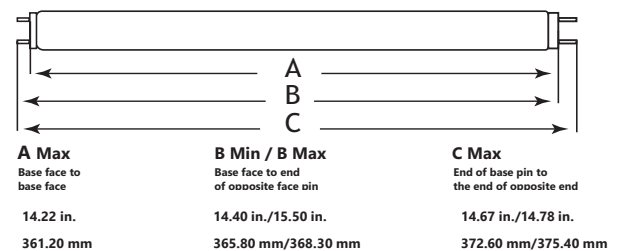


Nominal length : 15 in. (381 mm) Dia. : 1 in. (26 mm)

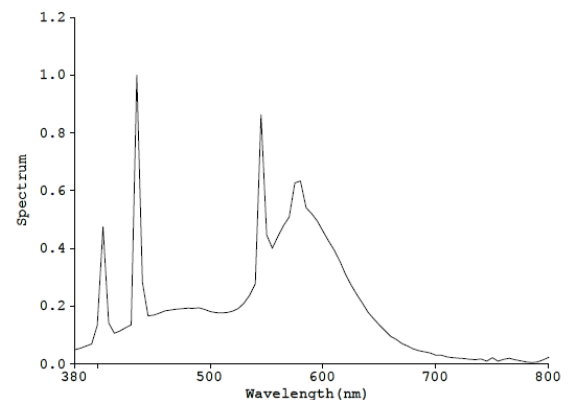
PERFORMANCE DATA

Shape: T8
 Base: G13 (Med Bipin)
 Starting method: Preheat Start (PH)
 Wattage (W): 14
 Colour temperature (K): 4 000
 CRI: 60
 Rated life (h): 10 000
 Mean lumens (lm): 710
 Nominal efficiency (lm/W): 51
 TCLP compliant: N/A
 Phosphor composition: Calcium Halophosphate Phosphor
 Nominal lamp operating frequency (Hz): 60
¹ Minimum starting temperature (°C): -10

DIMENSIONS



SPECTRAL DISTRIBUTION



¹ The minimum starting temperature is a function of the ballast. The minimum starting temperature is based on a STANDARD brand T8 ballast.

