

Project: _____ Type: _____
 Drawn by: _____ Catalogue #: _____ Date: _____

Individual Spec Sheet

GIMBAL HIGH OUTPUT

3.5" SQUARE LED DOWNLIGHT

ORDERING INFORMATION

Order code: 69427
Model number: DL/GIMBAL/3.5IN/SQR/12W/5C/WH
UPC: 069549027329
Case quantity: 24

PHYSICAL DATA

Size in (cm): 4 3/8 x 2 1/2 (11.1 x 6.45)
Shape: Square
Finish: White
Lens type: Clear polycarbonate
Mounting: Recessed

PERFORMANCE DATA

Watts (W): 12
Volts (V AC): 120
Color temperature (K)¹: 2 700/3 000/3 500/4 000/5 000
Lumen output (lm)²: 850
Efficacy (lm/W): 71
CRI: 90+
Life L70 (h)³: 50 000
Beam angle (°): 40
Environment: Wet location
THD (%): <20
Power factor: >0.9
Cable rating: FT6
Operating temp. range: -30 °C to 45 °C (-22 °F to 113 °F)
Dimming: Phase-Cut (ELV / Triac)

¹ Typical color temperature range: +/- 5 %.

² Lumen values are derived from Energy Star reported data. Initial lumens range: +/- 10 %.

³ Life hours are derived from IESNA LM80-08 testing report and projected per IESNA TM-21-11 extrapolations.

COMPATIBLE ACCESSORIES (order separately)

Order code	Model number	Type
66049	ACC/MPLATE/3.625IN/SQR/STD	Square mounting plate
66056	ACC/MPLATE/3.625IN/ADJ/STD	Adjustable mounting plate
66142	ACC/3/VAPOR BARRIER/STD	Vapor barrier extender
66820 ¹	ACC/MPLATE/3.625IN/HANG.BARS/STD	Mounting plate with hanger bars
66964 ²	LPDL/ACC/6FT/EXTCABLE/FT6/STD	6' FT6 Extension cord

¹ Includes brackets and screws.

² Compatible with the version that has a selectable CCT switch behind the LED module and the single CCT version.



This lighting equipment meets requirements of ICES-005 issue 5 class B for use in residential applications.
 Data is based upon tests performed in a controlled environment.
 Actual performance can vary depending on operating conditions. Specifications are subject to change without notice.

LUMEN SPECIFICATION TABLE

Order code	Model number	Watts (W)	2 700 K		3 000 K		3 500 K		4 000 K		5 000 K	
			Lumen output (lm)	Efficacy (lm/w)	Lumen output (lm)	Efficacy (lm/w)	Lumen output (lm)	Efficacy (lm/w)	Lumen output (lm)	Efficacy (lm/w)	Lumen output (lm)	Efficacy (lm/w)
69427	DL/GIMBAL/3.5IN/SQR/12W/5C/WH	12	852.5	71	875.6	73	850.6	70.9	889.9	74.2	1 094.5	91.2

DEFAULT PROGRAMMING

2 700 K

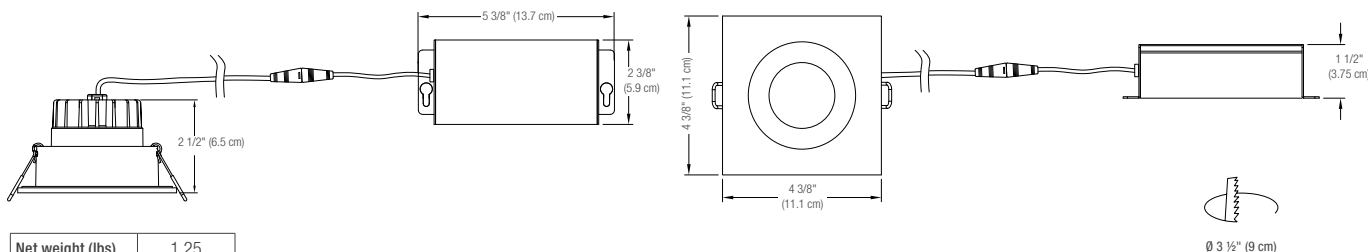
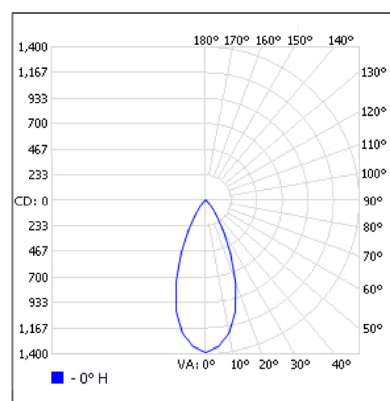
COMPATIBLE DIMMERS

Brand	Model
COOPER	RRD-6NA, AAL06
LEVITON	IPE04-1LZ ¹ , IPL06 ¹ , 6674, DSL06-1LZ ¹ , DDMX1, DSM10-1LZ
LUTRON	PD-5NE ¹ , DVCL-153P, PD-6WCL, CTCL-153P, DVCL-253P, AYCL-253P ¹

¹Dimming range : 5%-100%

¹Dimming range : 10%-100%

This table shows dimmers that have been tested and have demonstrated proper operation under normal conditions. Each installation being unique, various factors such as load, common neutrals or other electrical products on the circuit can, in certain instances, cause variance in system performance. Read and comply to the dimmer installation instructions. Consult dimming system manufacturer for additional support in operation. Some dimmers may require more than one product for stable operation. Stanpro recommends to use dimmers designed to work with LED products. Older dimmers designed for incandescent products may cause erratic operation.

DIMENSIONS AND WEIGHT

PHOTOMETRIC DATA¹
69427 • DL/GIMBAL/3.5IN/SQR/12W/5C/WH • 3 500 K • 850.6 lm
Polar candela distribution

¹ Complete IES files available on our website.

Zonal lumen summary

Zone	Lumens	% Fixture
0-30	652.9	76.8
0-40	770.5	90.6
0-60	838.4	98.6
60-90	12.1	1.4
70-100	3.5	0.4
90-120	0	0
0-90	850.6	100
90-120	0	0
0-90	850.6	

Illuminance at a distance

Center beam fc		Beam width
1.7'	480	
3.3'	127	1.4'
5.0'	55.5	2.7'
6.7'	30.9	4.0'
8.3'	20.1	5.4'
10.0'	13.9	6.7'
■ Vert. spread: 43.9°		8.1'

Qty	Description	Price

I accept the specifications of the luminaire configuration mentioned above.

Name:

Company:

Signature:

Date:

Data is based upon tests performed in a controlled environment. Actual performance can vary depending on operating conditions. All products are subject to change or may be discontinued any time without notice. Please contact your Stanpro customer service representative to confirm inventory levels at time of order.