

Project: _____ Type: _____
 Drawn by: _____ Catalogue #: _____ Date: _____

Individual Spec Sheet

CDHB2

HAZADOUS LOCATION HIGH BAY CLASS I, DIVISION 2, GROUPS A, B, C, D

ORDERING INFORMATION

Order code: 70281
Model number: CDHB2-S3-W-40-G-W3-GY
UPC: 069549033993
Case quantity: 1

PHYSICAL DATA

Size in. (cm): 13" x 4 5/8" (32,99 cm x 11,72 cm)
Lens material: Clear glass resistant to thermal shock and impact
Housing material: Grey aluminum alloy
Mounting: Pendant mount

PERFORMANCE DATA

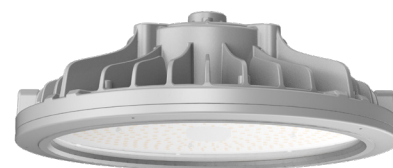
Watts (W): 100
Volts (V AC): 120-277
Colour temp. (K)¹: 4 000
Lumen output (lm)^{2,3}: 15 651
Efficiency (lm/W): 150
CRI: 80+
Life L70 (h): 60 000
Tested hours LM-80⁴: 17 000
Beam angle (°): 110
THD (%): ≤20
Power factor: ≥0.9
Surge protection (kV): Built-in DM 6 kV (line-line) and a CM 10 kV (line-earth)
Dimming: 0-10 V
Environment: Wet
IP rating: IP66
IK rating: IK09
NEMA: NEMA 4X
Operating temp. range: -40 °C to +55 °C
Temperature ratings: T4 (will not exceed 135 °C)
Suitable for zone ratings: Zone 2, Group IIC

¹ Typical color temperature range: +/- 5 %.

² Lumen values are derived from photometric testing. Initial lumens range: +/- 10 %.

³ Lumen values are based on 4 000 K default programming.

⁴ Life hours are derived from IESNA LM-80 testing report and projected per IESNA TM-21 extrapolations.



5
 yrs
 warranty

**quick
 ship**

**LED
 fixture**

**dimnable
 fixture**

**wet
 location**

**hazardous
 location**

**IP
 66**

IK09

**ICES
 005**

**NEMA
 4X**

**UL
 CERTIFIED**

**MARINE
 UL
 LISTED**

This lighting equipment meets requirements of ICES-005 issue 5 class B for use in residential applications.
 Data is based upon tests performed in a controlled environment.
 Actual performance can vary depending on operating conditions. Specifications are subject to change without notice.

ACCESSORIES (order separately)

Order code	Description
70380	Yoke mount for 30 W and 60 W models
70301	Yoke mount for 100 W and 150 W models
70381	Wireguard for flat lens 30 W and 60 W models
70382	Wireguard for flat lens 100 W and 150 W models
70383	Wireguard for spherical lens 30 W and 60 W models
70384	Wireguard for spherical lens 100 W and 150 W models
70385	Wireguard for drop lens 30 W and 60 W models
70302 ¹	Junction box

¹ Hazloc pipe and fittings not supplied.

COMPATIBLE DIMMERS¹

Brand	Model
Leviton	DS710
Lutron	NTSTV-DV, NFTV, DVSTV

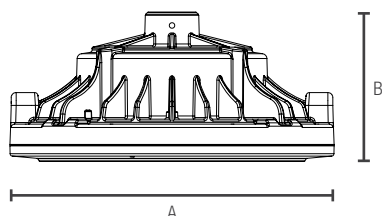
Dimming range: 0%-100%

¹ This table shows dimmers that have been tested and have demonstrated proper operation under normal conditions. Each installation being unique, various factors such as load, common neutrals or other electrical products on the circuit can, in certain instances, cause variance in system performance. Read and comply to the dimmer installation instructions. Consult dimming system manufacturer for additional support in operation. Some dimmers may require more than one product for stable operation. Stanpro recommends to use dimmers designed to work with LED products. Older dimmers designed for incandescent products may cause erratic operation.

DIMENSIONS AND WEIGHTS

PENDANT MOUNT

FLAT LENS



	100 W
A in. (cm)	13" (32.99 cm)
B in. (cm)	4 5/8" (11.72 cm)
Net weight (lbs)	13.67

Qty	Description	Price

I accept the specifications of the luminaire configuration mentioned above.

Name: _____

Company: _____

Signature: _____

Date: _____

Data is based upon tests performed in a controlled environment. Actual performance can vary depending on operating conditions. All products are subject to change or may be discontinued any time without notice. Please contact your Stanpro customer service representative to confirm inventory levels at time of order.