

Project: _____ Type: _____
 Drawn by: _____ Catalogue #: _____ Date: _____

Individual Spec Sheet

CDHF2

HAZADOUS LOCATION FLOOD LIGHT CLASS I, DIVISION 2, GROUPS A, B, C, D

ORDERING INFORMATION

Order code: 70278
Model number: CDHF2-S2W3-W-40-GY
UPC: 069549033962
Case quantity: 1

PHYSICAL DATA

Size in. (cm): 9 5/8" x 7 1/4" x 4 5/8" (24,5 cm x 18,4 cm x 11,7 cm)
Lens material: Tempered shock and impact resistant tempered glass
Housing material: Grey aluminum alloy
Mounting: Pendant mount

PERFORMANCE DATA

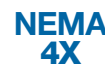
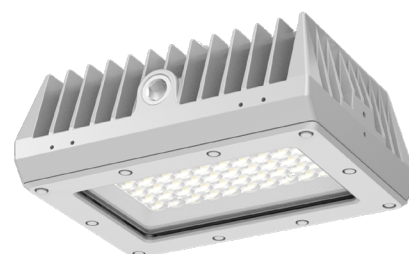
Watts (W): 60
Volts (V AC): 120-277
Colour temp. (K): 4 000
Lumen output (lm):^{2,3} 9 724
Efficiency (lm/W): 157
CRI: 70+
Life L70 (h): 60 000
Tested hours LM-80: 10 000
Beam angle (°): 110
THD (%): ≥0.9
Power factor: ≤20
Surge protection (kV): Built-in DM 6 kV (line-line) and a CM 10 kV (line-earth)
Dimming: 0-10 V
Environment: Wet
IP rating: IP66
IK rating: IK08
NEMA: NEMA 4X
Operating temp. range: -40 °C to +55 °C
Temperature ratings: T4A (will not exceed 120 °C)
Suitable for zone ratings: Zone 2, Group IIC

¹ Typical color temperature range: +/- 5 %.

² Lumen values are derived from photometric testing. Initial lumens range: +/- 10 %.

³ Lumen values are based on 4 000 K default programming.

⁴ Life hours are derived from IESNA LM-80 testing report and projected per IESNA TM-21 extrapolations.



This lighting equipment meets requirements of ICES-005 issue 5 class B for use in residential applications.
 Data is based upon tests performed in a controlled environment.
 Actual performance can vary depending on operating conditions. Specifications are subject to change without notice.

ACCESSORIES (order separately)

Order code	Type
70341	Yoke mount for 30 and 60 W models (for wall/ground applications)
70298	Yoke mount for 30 and 60 W models (for ceiling applications)
70347	Glareshield for 30 and 60 W models
70351	Wireguard for 30 and 60 W models
70355	Pole mounting for 30 and 60 W models
70359	Slipfitter
70360	Adjustable arm for square/round pole
70361	Slipfitter with wall/pole adapter
70362	Side surface mount
70363	Chain mount
70302 ¹	Junction box

¹ Hazloc pipe and fittings not supplied.

COMPATIBLE DIMMERS¹

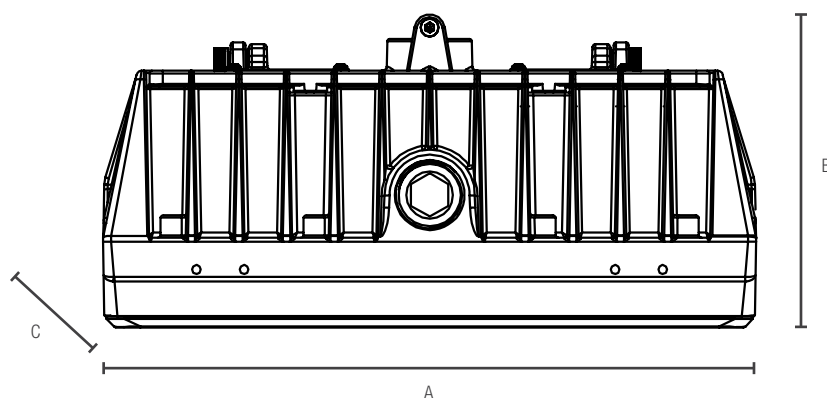
Brand	Model
Leviton	DS710
Lutron	NTSTV-DV, NFTV, DVSTV

Dimming range: 0%-100%

¹ This table shows dimmers that have been tested and have demonstrated proper operation under normal conditions. Each installation being unique, various factors such as load, common neutrals or other electrical products on the circuit can, in certain instances, cause variance in system performance. Read and comply to the dimmer installation instructions. Consult dimming system manufacturer for additional support in operation. Some dimmers may require more than one product for stable operation. Stanpro recommends to use dimmers designed to work with LED products. Older dimmers designed for incandescent products may cause erratic operation.

DIMENSIONS AND WEIGHTS

PENDANT MOUNT



	60 W
A in. (cm)	9 5/8 (24.5)
B in. (cm)	7 1/4 (18.4)
C in. (cm)	4 5/8 (11.7)
Net weight (lbs)	13.23

Qty	Description	Price

I accept the specifications of the luminaire configuration mentioned above.

Name: _____

Company: _____

Signature: _____

Date: _____

Data is based upon tests performed in a controlled environment. Actual performance can vary depending on operating conditions. All products are subject to change or may be discontinued any time without notice. Please contact your Stanpro customer service representative to confirm inventory levels at time of order.