

Project: _____ Type: _____
 Drawn by: _____ Catalogue #: _____ Date: _____

Individual Spec Sheet

DISK LIGHT - CLDK

LED CEILING LUMINAIRE

5 CCT SELECTABLE

ORDERING INFORMATION

Order code: 70177
Model number: CLDK6-G2-R15W-A/5CWH
UPC: 069549032378
Case quantity: 8

PHYSICAL DATA

Dimensions: 6" (15.2 cm)
Lens Type: Frosted plastic
Frame Material: Metal
Mounting: Surface mount

PERFORMANCE DATA

Watts (W): 15
Volts (VAC): 120
Colour temperature (K)¹: 2 700/3 000/3 500/4 000/5 000
Lumen output (lm)²: 1 230
Lumen per Watts (lm/W): 82
CRI: 90
Life L70 (h)³: 50 000
Beam angle (°): 113
THD (%): 6.5
Power factor: >0.9
Frequency (Hz): 60
Operating temp. range: -20 °C to 45 °C (-4 °F to 113 °F)

¹ Typical colour temperature range: +/- 5 %.

² Lumen values are derived from Energy Star reported data. Initial lumens range: +/- 10 %.

³ Life hours are derived from IESNA LM-80 testing report and projected per IESNA TM-21 extrapolations.

LUMEN SPECIFICATION TABLE

Watts (W)	2 700 K		3 000 K		3 500 K		4 000 K		5 000 K	
	Lumen output (lm)	Efficacy (lm/W)	Lumen output (lm)	Efficacy (lm/W)	Lumen output (lm)	Efficacy (lm/W)	Lumen output (lm)	Efficacy (lm/W)	Lumen output (lm)	Efficacy (lm/W)
15	1 207	80	1 263	84	1 297	86	1 299	87	1 243	83

DEFAULT PROGRAMMING

3 000 K



This lighting equipment meets requirements of ICES-005 issue 5 class B for use in residential applications.
 Data is based upon tests performed in a controlled environment.
 Actual performance can vary depending on operating conditions. Specifications are subject to change without notice.

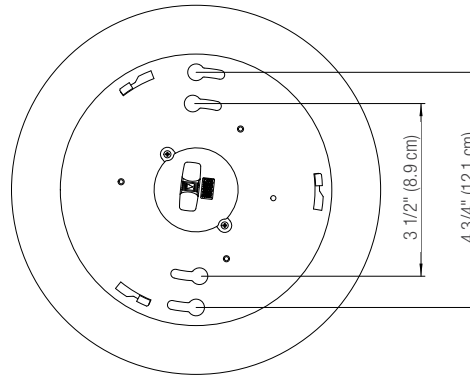
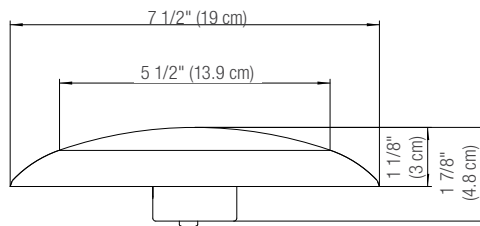
COMPATIBLE DIMMERS¹

Brand	Model
Legrand	PD-5NE, RH703PTUTC
Cooper	RRD-6NA
Leviton	IPL06, 6674, DSL06-1ZL, DSM10-1LZ, IPE04-1LZ, DDMX1
Lutron	PD-6WCL, DVCL-153P, CTCL-153P, DVCL-253P, AYCL-253P, DVPR-253, SELV-300P, MACL-153P

DIMMING RANGE: 10 - 100%

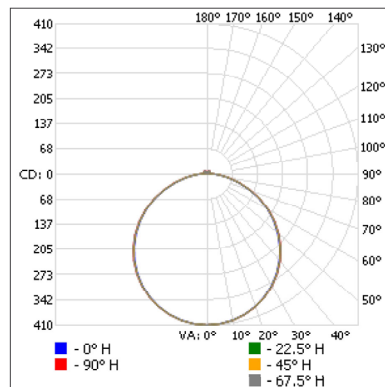
¹ This table shows dimmers that have been tested and have demonstrated proper operation under normal conditions. Each installation being unique, various factors such as load, common neutrals or other electrical products on the circuit can, in certain instances, cause variance in system performance. Read and comply to the dimmer installation instructions. Consult dimming system manufacturer for additional support in operation. Some dimmers may require more than one product for stable operation. Stanpro recommends to use dimmers designed to work with LED products. Older dimmers designed for incandescent products may cause erratic operation.

DIMENSIONS

PHOTOMETRIC DATA¹

70177 • CLDK6-G2-R15W-A/5CWH • 3 000 K • 1 263.2 lm

Polar candela distribution



Zonal lumen summary

Zone	Lumens	% Fixture
0-30	319.8	25.3
0-40	526.2	41.7
0-60	941.6	74.5
60-90	288.4	22.8
70-100	139.7	11.1
90-120	11.9	0.9
0-90	1 230.0	97.4
90-180	33.2	2.6
0-180	1 263.2	100

Illuminance at a distance

Center beam fc		Beam width	
1.7'	142	5.3'	5.5'
3.3'	37.6	10.3'	10.6'
5.0'	16.4	15.6'	16.1'
6.7'	9.11	20.9'	21.6'
8.3'	5.94	26.0'	26.7'
10.0'	4.09	31.3'	32.2'

Vert. spread: 114.8°
Horiz. spread: 116.3°

¹ Complete IES files available on our website.

Qty	Description	Price

I accept the specifications of the luminaire configuration mentioned above.

Name: _____

Company: _____

Signature: _____

Date: _____

Data is based upon tests performed in a controlled environment. Actual performance can vary depending on operating conditions.
All products are subject to change or may be discontinued any time without notice.