

Project: _____ Type: _____
 Drawn by: _____ Catalogue #: _____ Date: _____

Individual Spec Sheet

24 V LED DRIVER

5-IN-1 DIMMABLE HARDWIRE

Class 2

ORDERING INFORMATION

Order Code: 70511
Model Number: LED/DRIVER/30W/24V/HW/5-IN-1D
UPC: 069549035263
Case Quantity: 20

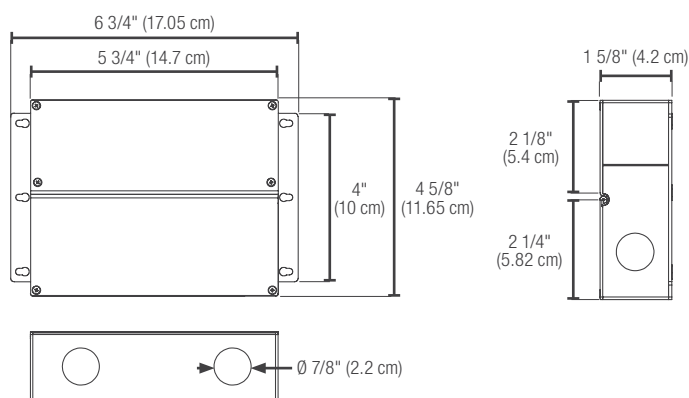
PHYSICAL DATA

Dimensions: 6 x 4 5/8 x 1 5/8 in (15.3 x 11.7 x 4.0 cm)
Type: Hardwire Driver - Dimmable
Color: Black

PERFORMANCE DATA

Output Power (W): 30
Input Voltage (V AC): 120-277
Output Voltage (V DC): 24-26
Input Current (mA): 500
Output Current (mA): 1 250
Frequency (Hz): 47/63
Power Factor: ≥0.95
Operating Temperature: -40 °C to 60 °C (-40 °F to 140 °F)
Dimming Type: Forward and Reverse (TRIAC / ELV / MLV, 0-10 V, 1-10 V, Potentiometer, 10 V PWM)
Dimming Range: 0-100 %

DIMENSIONS



5 yrs
warranty



CLASS 2
compliant



Qty	Description	Price

I accept the specifications of the luminaire configuration mentioned above.

Name: _____
 Company: _____
 Signature: _____

Date: _____

Data is based upon tests performed in a controlled environment. Actual performance can vary depending on operating conditions.
 All products are subject to change or may be discontinued any time without notice.