



PRODUCT
CODE(S):

NOTES:

TYPE:

Interactive PDF. Click to type.

FUSION Flood Lights

Power and 3CCT Selectable | 120-347V

Easily configure beam angle, power, photocell, and CCT using field accessible integrated switches!
Illuminate large outdoor areas including parking lots, building exteriors, sports fields, and more!

Power Selectable

3 power settings per fixture

3CCT Selectable

3000K / 4000K / 5000K

120-347V Universal Driver

0-10V dimming

Mounting Sold Separately

See page 6 for complete mounting options. Mount required for use

3 Distribution Types per Luminaire

5H5V / 6H6V / 7H6V

Built-in Photocell

switch off to disable

IK07 and IP65 Rated



80W



150W



300W

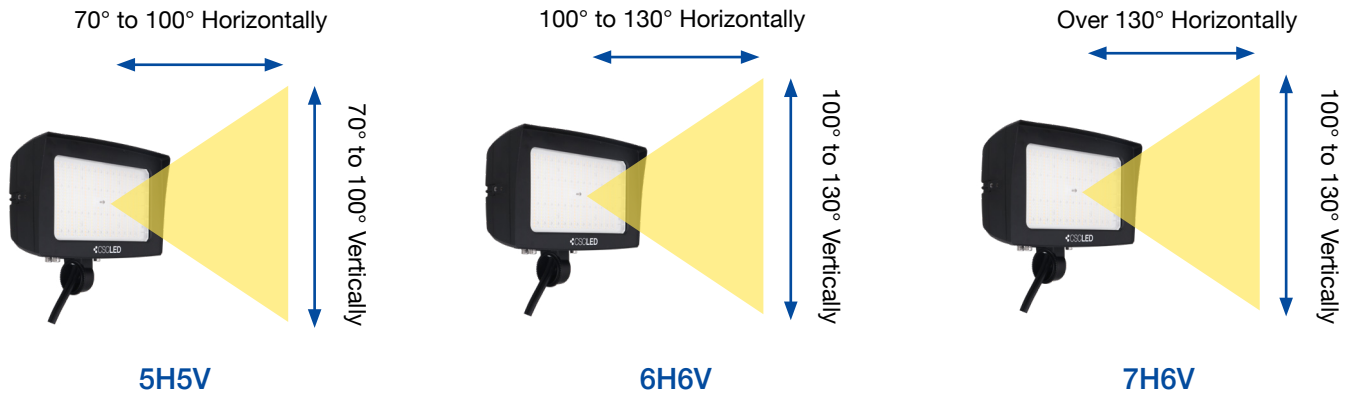
All models are available in Bronze & Black

Pictured: Bronze

Included in Box:
Optic Adjustment Tool



DISTRIBUTION TYPES (ALL WATTAGES)



NEMA BEAM SPREAD CLASSIFICATION

The NEMA distribution identifies the approximate horizontal and vertical beam spread, to 10% of the maximum beam intensity.

E.g.: 60 Horizontal x 50 Vertical = NEMA 4X4 or 4H4V

NEMA Beam Spread Classification		
Beam Spread (Degrees)	NEMA Type	Beam Description
10° - 18°	1	very narrow
18° - 29°	2	narrow
29° - 46°	3	medium narrow
46° - 70°	4	medium
70° - 100°	5	medium wide
100° - 130°	6	wide
130° +	7	very wide

SELECTION SWITCHES AND PHOTOCELL OPTIONS



Beam Angle Selector



Power, CCT, and Photocell
Selector Switches



Blanking Plate with
1/2" Knockout

LIGHT SPECIFICATIONS AND ELECTRICAL



PRODUCT CODE	WATTS	CCT	LUMENS	EFFICACY	VOLTAGE	CRI	FACTORY SETTINGS	MAX CURRENT	EPA
FLF-80W-3P-3CCT-3B-UD-BZ FLF-80W-3P-3CCT-3B-UD-BK	40W	3000K	7060 lm	176 lm/W	120-347V	82	80W 4000K 7H6V	0.8A	0.48ft²
		4000K	7407 lm	185 lm/W					
		5000K	7280 lm	182 lm/W					
	60W	3000K	8860 lm	148 lm/W					
		4000K	9377 lm	156 lm/W					
		5000K	9096 lm	152 lm/W					
	80W	3000K	10694 lm	134 lm/W					
		4000K	11243 lm	141 lm/W					
		5000K	10835 lm	135 lm/W					
FLF-150W-3P-3CCT-3B-UD-BZ FLF-150W-3P-3CCT-3B-UD-BK	100W	3000K	15167 lm	152 lm/W	120-347V	80	150W 4000K 7H6V	1.5A	0.78ft²
		4000K	15830 lm	158 lm/W					
		5000K	15438 lm	154 lm/W					
	125W	3000K	17951 lm	144 lm/W					
		4000K	19313 lm	155 lm/W					
		5000K	18702 lm	150 lm/W					
	150W	3000K	21141 lm	141 lm/W					
		4000K	21936 lm	146 lm/W					
		5000K	21061 lm	140 lm/W					
FLF-300W-3P-3CCT-3B-UD-BZ FLF-300W-3P-3CCT-3B-UD-BK	200W	3000K	29696 lm	148 lm/W	120-347V	80	300W 4000K 7H6V	3.0A	1.27ft²
		4000K	31741 lm	159 lm/W					
		5000K	31461 lm	157 lm/W					
	250W	3000K	35587 lm	142 lm/W					
		4000K	38136 lm	153 lm/W					
		5000K	36884 lm	148 lm/W					
	300W	3000K	41725 lm	139 lm/W					
		4000K	45074 lm	150 lm/W					
		5000K	46413 lm	155 lm/W					

DLC INFORMATION Where XX represents finish colour (Bronze or Black)

PRODUCT CODE	PRIMARY USE	DLC ID	CLASSIFICATION
FLF-80W-3P-3CCT-3B-UD-XX	Architectural Flood and Spot Luminaires	S-32H9N1	Premium
FLF-150W-3P-3CCT-3B-UD-XX	Architectural Flood and Spot Luminaires	S-FWNWM8	Premium
FLF-300W-3P-3CCT-3B-UD-XX	Architectural Flood and Spot Luminaires	S-FB5YXZ	Premium

SPECIFICATIONS & ELECTRICAL

Surge Protection (80W model)	6kV
Surge Protection (150W & 300W models)	10kV
Auxiliary Output	12V
Power Factor	≥0.9
THD	≤20%
Operating Temp	-40°C to 50°C
Operating Temp with Sensor	-30°C to 45°C
Distribution	5H5V/6H6V/7H6V
Distribution Angles	See page 2
Dimmable	0-10V
L70 Life	>50,000 hrs
Warranty	10-year

APPROVALS & RATINGS

cUL	E482965
IP Rating	IP65
IK Rating	IK07

CONSTRUCTION

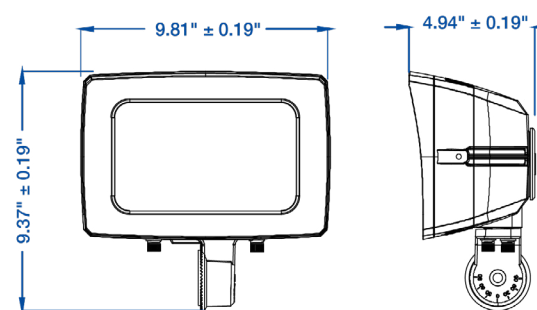
Housing	Die-Cast Aluminum
Lens	Polycarbonate
Finish	Powder Coated
Finish Colour	Bronze or Black
Cord Whip*	23.6"

*Measured outside of luminaire

MEASUREMENTS (IN) & WEIGHTS (LBS)

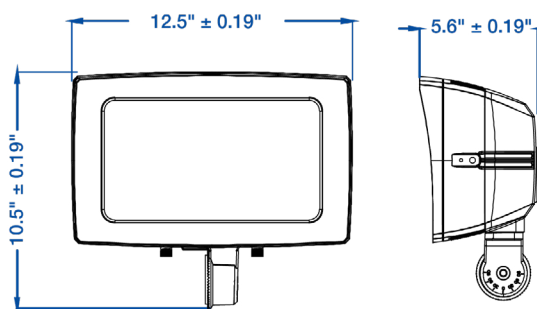
FLF-80W-3P-3CCT-3B-UD-XX

Product Meas.	9.8" x 9.4" x 4.9"
Fixture Weight	4.69 lbs
Carton Qty	1
Carton G.W.	5.35 lbs
Carton Meas.	12.6" x 12" x 7.1"



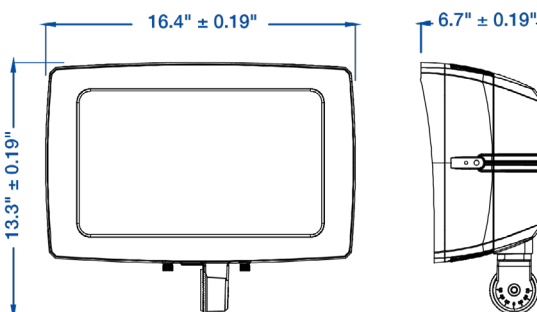
FLF-150W-3P-3CCT-3B-UD-XX

Product Meas.	12.5" x 10.5" x 5.6"
Fixture Weight	9.64 lbs
Carton Qty	1
Carton G.W.	11.18 lbs
Carton Meas.	15.4" x 13.8" x 8.2"



FLF-300W-3P-3CCT-3B-UD-XX

Product Meas.	16.4" x 13.3" x 6.7"
Fixture Weight	16.9 lbs
Carton Qty	1
Carton G.W.	18.7 lbs
Carton Meas.	19.3" x 16.5" x 9.4"



Where XX represents finish colour (Bronze or Black)

ACCESSORIES (Sold Separately)

		SHADED CELLS INDICATE COMPATIBILITY					
		BRONZE			BLACK		
PRODUCT NUMBER	PRODUCT NAME	80W	150W	300W	80W	150W	300W
FLF-YM01-XS-BZ	Yoke Mount, Extra Small, Bronze						
FLF-YM01-SM-BZ	Yoke Mount, Small, Bronze						
FLF-YM01-LG-BZ	Yoke Mount, Large, Bronze						
FLF-YM01-XS-BK	Yoke Mount, Extra Small, Black						
FLF-YM01-SM-BK	Yoke Mount, Small, Black						
FLF-YM01-LG-BK	Yoke Mount, Large, Black						
FLF-KN01-XS-BZ	Knuckle Mount, Extra Small, Bronze						
FLF-KN01-XS-BK	Knuckle Mount, Extra Small, Black						
FL-SF01-BZ	Slip Fitter, Bronze						
FL-SF01-BK	Slip Fitter, Black						
FL-PM01-BZ	Pole Mount, Bronze						
FL-PM01-BK	Pole Mount, Black						
FL-MM01-BZ	Multi Mount, Bronze						
FL-MM01-BK	Multi Mount, Black						
FL-FM01-BZ	Fixed Mount, Bronze						
FL-FM01-BK	Fixed Mount, Black						
FL-TR01-BZ	Trunnion Mount, Bronze						
FL-TR01-BK	Trunnion Mount, Black						
JL-205LV*	Photocell, 120-277V						
JL-207E*	Photocell, 347V						
JL-200	Photocell Receptacle, 0-480V						
JL-208*	Shorting Cap						

*Requires JL-200

BULLHORNS & TENON ADAPTORS (Sold Separately)

Slip Fitter is sold separately and is required for use. Bullhorns and Tenon Adaptors are available in Bronze and Black. For more information on Pole Accessories, see series product sheet.



Inline
2-head



Inline
3-head



Round
3", 4", or 5" to 2 3/8"



Square
4" or 5" to 2 3/8"

MOUNTING (SOLD SEPARATELY & REQUIRED)

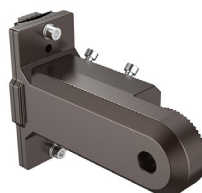
Each mount is available in Bronze and Black finishes. Full part numbers are listed in the table on page 5



Trunnion Mount



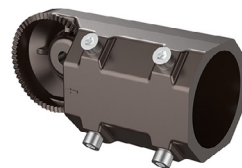
Fixed Mount



Multi Mount



Pole Mount



Slip Fitter



Yoke Mount



Knuckle Mount