

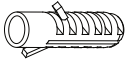
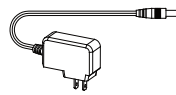
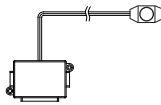
# LED PUCK LIGHT KIT INSTALLATION INSTRUCTIONS



Model #s: 61136 (LC-75-L-3-08D-W-3kits-3) / 61137 (LC-75-L-3-08D-B-3kits-3) / 61138 (LC-75-L-3-08D-BN-3kits-3)

## PACKAGING CONTENTS:

3 LED puck lights (A)    Junction box with dimmer (B)    Power supply plug (C)    8 mounting screws (AA)    8 Anchors (BB)

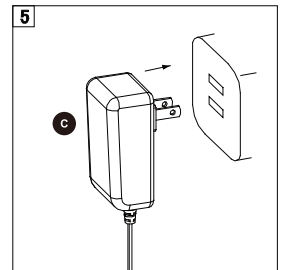
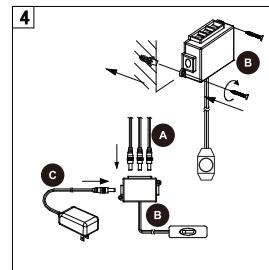
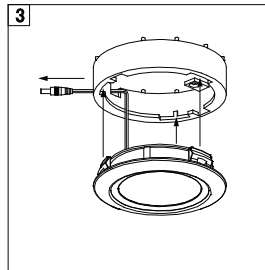
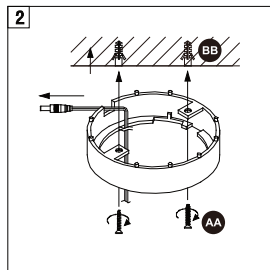
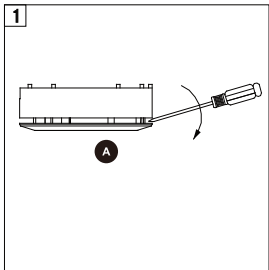


## NOTE:

- Please read the instruction carefully before attempting to assemble, operate or install the product.
- For indoor use only.
- Risk of fire and electric shock.
- Make sure to cut the power before installation begins.

## SURFACE MOUNTING INSTRUCTIONS:

1. Locate the line between the surface plate and the LED puck housing and carefully use a flat screwdriver to separate the front plate from the housing.
2. Drill holes into the mounting surface that correspond with screw holes on the housing of the LED fixture (A). Insert anchors (BB) into holes (BB). Lodge power wire into the notch on housing of the LED fixture (A) and install housing onto mounting surface with screws (AA).
3. Replace the front plate of the LED puck into the housing.
4. Install the junction box with dimmer (B) into the wall. Secure the screws (AA). Connect the LED pucks (A) and power supply (C) to the junction box and dimmer (B).
5. Insert the supply plug (C) into the socket.



## RECESSED MOUNTING INSTRUCTIONS:

1. Locate the line between the surface plate and the LED puck housing and carefully use a flat screwdriver to separate the front plate from the housing.
2. Drill a 67 mm (2 5/8 in.) round hole into the mounting surface. Thread the DC plug wire through the hole and then mount the housing of the LED fixture (A).
3. Replace the front plate of the LED puck into the housing.
4. Install the junction box with dimmer (B) into the wall. Secure the screws (AA). Connect the LED pucks (A) and power supply (C) to the junction box and dimmer (B).
5. Insert the supply plug (C) into the socket.

