

Individual Spec Sheet

OLYMPUS

LED SPORTS LIGHT

3 POWER SELECTABLE

ORDERING INFORMATION

Order Code: 69771
Model Number: OLPPS10003440KBKYK
UPC: 069549029934
Case Quantity: 1
DLC Unique ID: S-09FTKV

PHYSICAL DATA

Finish: Black
Housing Material: Die-cast aluminum
Mounting: Yoke
Lens Material: Frosted polycarbonate

PERFORMANCE DATA

Watts (W): 600/800/1 000
Volts (V AC): 200-480
Color Temperature (K)¹: 4 000
Lumen Output (lm)²: 91 893/119 450/144 977
Efficacy (lm/W): 143
CRI: 70+
Life L70 (h)³: 150 000
IP Rating: IP65
IK Rating: IK08
Dimming: 0-10 V
Power Factor: 0.989-0.942
Distribution Type: Nema 3x3
Frequency (Hz): 50/60
Surge Protection (kV): 20
B.U.G. Rating: B5 U0 G2
Operating Temp. Range: -40 °C to 45 °C (-40 °F to 113 °F)

¹ Typical color temperature range: +/- 5 %.

² Lumen values are derived from photometric testing. Initial lumens range: +/- 10 %.

³ Life hours are derived from IESNA LM-80 testing report and projected per IESNA TM-21 extrapolations.

LUMEN SPECIFICATION TABLE

Watts (W)	4 000 K	
	Lumen output (lm)	Efficacy (lm/W)
600	91 893	155
800	119 450	149
1 000	144 977	143

DEFAULT PROGRAMMING

1 000 W

This lighting equipment meets requirements of ICES-005 issue 5 class A for use in commercial applications./ class B for use in residential applications.
 Data is based upon tests performed in a controlled environment.
 Actual performance can vary depending on operating conditions. Specifications are subject to change without notice.



power
selectable



5 yrs
warranty



quick
ship



LED
fixture



dimmable



wet
location



IK08



ICES
005



Not all products are qualified on the DLC QPL. To view our DLC qualified products, please consult the DLC Qualified Products List at www.designlights.org/search.

ACCESSORIES (order separately)

Order code	Type
69770	Glare shield 1 000 W
69768	Laser pointer ²
69767	Slipfitter 600 W-1 000 W ¹
70271	3-Pin twist lock photocell
70272	7-Pin twist lock photocell

¹ EPA value: 3.85 ft² with a 0° tilt

² Laser pointer includes one rechargeable battery and battery recharger



Glare shield



Laser pointer



Slipfitter

COMPATIBLE DIMMERS¹

Brand	Model
Lutron	DVSTV, NTSTV-DV
Legrand	RH4FBL3PTC

¹ This table shows dimmers that have been tested and have demonstrated proper operation under normal conditions. Each installation being unique, various factors such as load, common neutrals or other electrical products on the circuit can, in certain instances, cause variance in system performance. Read and comply to the dimmer installation instructions. Consult dimming system manufacturer for additional support in operation. Some dimmers may require more than one product for stable operation. Stanpro recommends to use dimmers designed to work with LED products. Older dimmers designed for incandescent products may cause erratic operation.



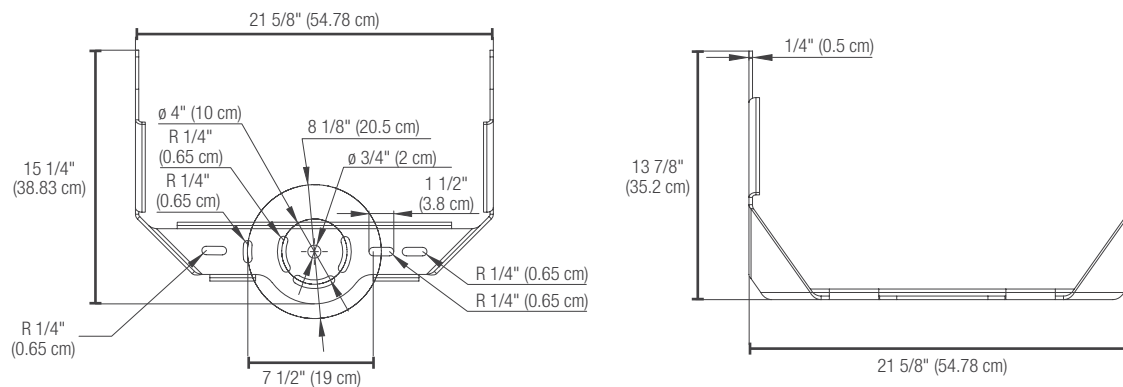
3-Pin Twist lock photocell



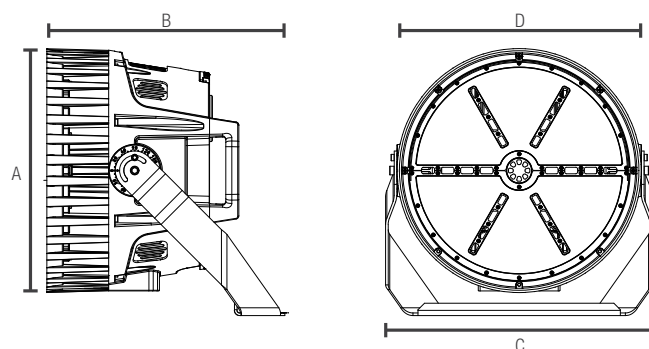
7-Pin Twist lock photocell

DRILLING PATTERN

Yoke - 1 000 W models



DIMENSIONS AND WEIGHTS



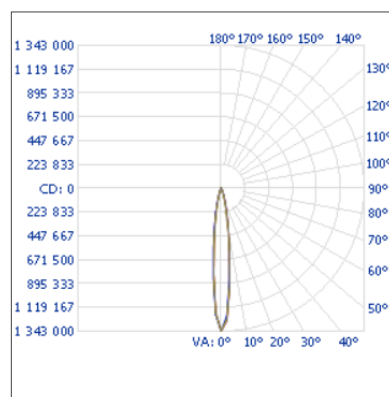
	1 000 W
A in. (cm)	21.3 (54.10)
B in. (cm)	14.8 (37.59)
C in. (cm)	23.7 (60.20)
D in. (cm)	21.5 (54.61)
Net weight (lbs)	72.75

Data is based upon tests performed in a controlled environment. Actual performance can vary depending on operating conditions. All products are subject to change or may be discontinued any time without notice. Please contact your Stanpro customer service representative to confirm inventory levels at time of order.

PHOTOMETRIC DATA¹

69771 • OLPPS10003440KBKYK • 1 000 W • 4 000 K • Nema 3x3 • 139 886 lm

Polar candela distribution




Zonal lumen summary

Zone	Lumens	% Fixture
0-30	119 327.4	85.3
0-40	125 956.3	90
0-60	135 069.3	96.6
60-90	4 816.8	3.4
0-90	139 886.1	100

Illuminance at a distance

Center beam fc		Beam width	
17.0'	4 645	3.9'	3.9'
34.0'	1 161	7.9'	7.8'
51.0'	516	11.8'	11.7'
68.0'	290	15.7'	15.6'
85.0'	186	19.7'	19.5'
102.0'	129	23.6'	23.4'



 Vert. spread: 13.2°
 Horiz. spread: 13.1°

¹ Complete IES files available on our website.

Data is based upon tests performed in a controlled environment. Actual performance can vary depending on operating conditions. All products are subject to change or may be discontinued any time without notice. Please contact your Stanpro customer service representative to confirm inventory levels at time of order.