

Individual Spec Sheet

ARCHI

4" ARCHITECTURAL DOWNLIGHT

5 CCT and 3 Power Selectable

ORDERING INFORMATION

Order Code: 70450
Model Number: AR4-PS50-Q-80-5CWH
UPC: 069549034822
Model: New construction
Case Quantity: 4

PHYSICAL DATA

Size in (cm): 4 (10.16)
Lens Material: Clear polycarbonate
Housing Material: Aluminum
Housing Finish: White
Mounting: Recessed

PERFORMANCE DATA

Watts (W): 30/40/50
Volts (V AC): 120-347
Color Temperature (K)¹: 2 700/3 000/3 500/4 000/5 000
Lumen Output (lm)²: Up to 3 700/4 700/5 600
Efficacy (lm/W)²: 100
CRI: 80+
Life L70 (h)³: 50 000
Beam Angle (°): 38
Environment: Wet location
Power Factor: >0.9
THD (%): <20
Frequency (Hz): 60
Dimming: 0-10 V
Operating Temp. Range: -40 °C / -40 °F to 25 °C / 77 °F

¹ Typical colour temperature range: +/- 5 %.

² Lumen values are derived from Energy Star reported data. Initial lumens range: +/- 10 %. Efficacy at 2 700 K with highest wattage.

³ Life hours are derived from IESNA LM-80 testing report and projected per IESNA TM-21 extrapolations.

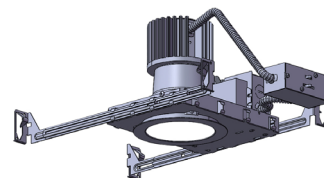
LUMEN SPECIFICATION TABLE

Watts (W)	Type	Beam angle (°)	Lens	2 700 K		3 000 K		3 500 K		4 000 K		5 000 K	
				Lumen output (lm)	Efficacy (lm/W)	Lumen output (lm)	Efficacy (lm/W)	Lumen output (lm)	Efficacy (lm/W)	Lumen output (lm)	Efficacy (lm/W)	Lumen output (lm)	Efficacy (lm/W)
30	New construction	38	Clear	3 427	114	3 580	119	3 684	122	3 730	124	3 737	124
40				4 366	109	4 562	114	4 709	117	4 789	119	4 753	118
50				5 068	101	5 262	105	5 316	106	5 296	105	5 042	100

DEFAULT PROGRAMMING

30 W/2 700 K

This lighting equipment meets requirements of ICES-005 issue 5 class A for use in commercial applications.
 Data is based upon tests performed in a controlled environment.
 Actual performance can vary depending on operating conditions. Specifications are subject to change without notice.

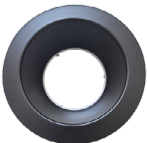


ICES
005



ACCESSORIES (order separately)

Order code	Model number	Type	Master case qty
70454	BLACK BAFFLE AND FROSTED LENS FOR AR4	Black Baffle and Frosted Lens	48
70455	WHITE BAFFLE AND FROSTED LENS FOR AR4	White Baffle and Frosted Lens	48
70456	SILVER HAZE BAFFLE AND FROSTED LENS FOR AR4	Silver Haze Baffle and Frosted Lens	48
70457	BLACK BAFFLE AND CLEAR LENS FOR AR4	Black Baffle and Clear Lens	48
70458	SILVER HAZE BAFFLE AND CLEAR LENS FOR AR4	Silver Haze Baffle and Clear Lens	48
70459	WIDE BEAM ANGLE FOR AR4	Wide Beam Angle	100
70460	NARROW BEAM ANGLE FOR AR4	Narrow Beam Angle	100



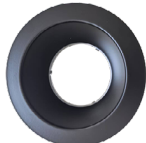
70454



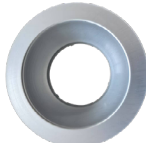
70455



70456



70457



70458

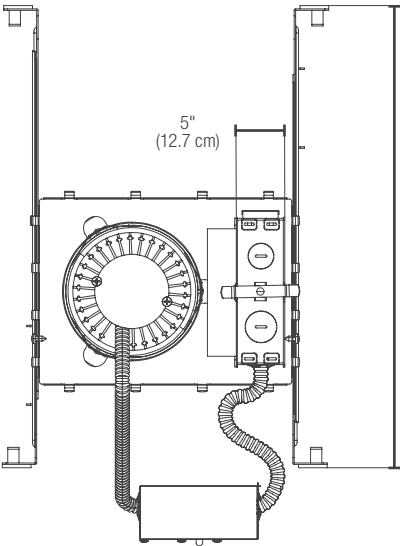


70459

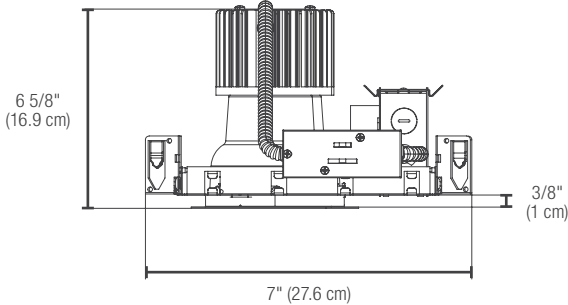


70460

DIMENSIONS AND WEIGHTS



14 - 24 1/8" max
(35.4 - 61.4 cm max)



Net weight (lbs)	3.9
------------------	-----



5 1/8" (13 cm)

Qty	Description	Price

I accept the specifications of the luminaire configuration mentioned above.

Name: _____

Company: _____

Signature: _____

Date: _____

Data is based upon tests performed in a controlled environment. Actual performance can vary depending on operating conditions. All products are subject to change or may be discontinued any time without notice. Please contact your Stanpro customer service representative to confirm inventory levels at time of order.