

Pole Accessories

All models are available in Black (-BK) and Bronze (-BZ) finishes

Maximize versatility and save on costs with pole accessories that provide flexible installation options without the need to replace existing poles.

Standard 2 3/8" Tenon Tops

compatible with any Slip Fitter

Expand Coverage and Flexibility With Pole Accessories

mount up to three fixtures on a single pole

2 or 3-Head Bullhorns

in-line orientation

Round Tenon Adaptors

for 3", 4", and 5" pole sizes

Square Tenon Adaptors

for 4" and 5" pole sizes

All Pole Accessories Available in Black (-BK) and Bronze (-BZ)

powder coated steel



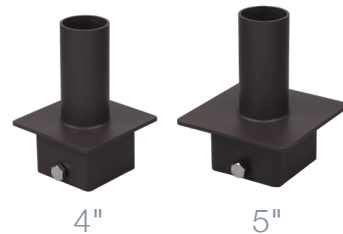
Bullhorns



3"

4"

5"



4"

5"

Tenon Adaptors

Included in Box: Stainless Steel Hardware, Bracket End Caps

TENON ADAPTORS

Where *-BK* represents Black and *-BZ* represents Bronze

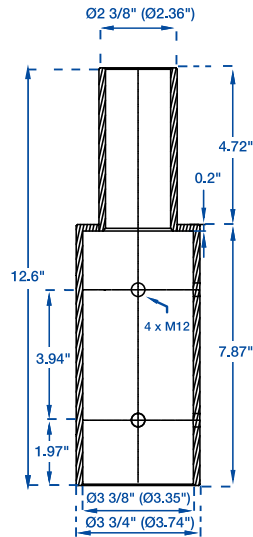
ROUND



3" to 2 3/8"

PA-TA-R3-BK
PA-TA-R3-BZ

Max. Load: 23.1 lbs



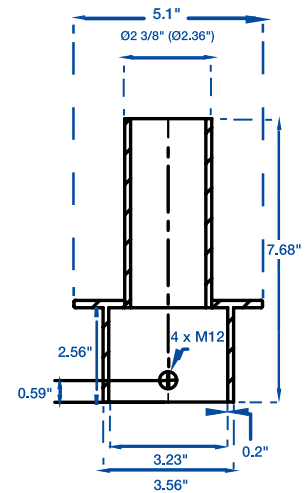
SQUARE



4" to 2 3/8"

PA-TA-S4-BK
PA-TA-S4-BZ

Max. Load: 23.1 lbs



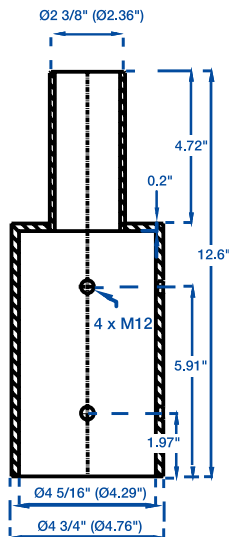
NOTE: Square tenon adaptors fit inside existing pole



4" to 2 3/8"

PA-TA-R4-BK
PA-TA-R4-BZ

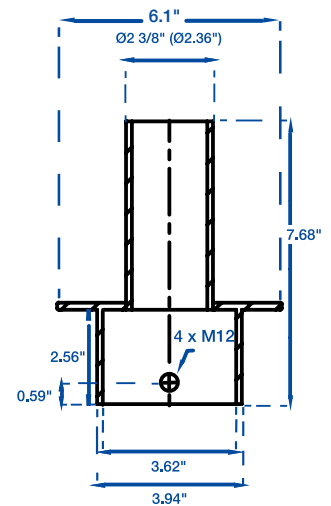
Max. Load: 23.1 lbs



5" to 2 3/8"

PA-TA-S5-BK
PA-TA-S5-BZ

Max. Load: 23.1 lbs



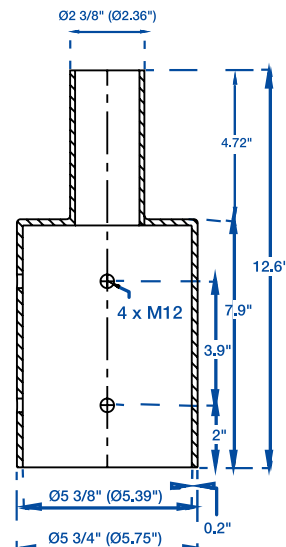
NOTE: Square tenon adaptors fit inside existing pole



5" to 2 3/8"

PA-TA-R5-BK
PA-TA-R5-BZ

Max. Load: 23.1 lbs



Product #	Unit Weight	Carton Quantity	Carton Weight	Carton Dimensions
PA-TA-R3	6.2 lbs	1	6.5 lbs	12.8" x 3.9" x 3.9"
PA-TA-R4	8.2 lbs	1	8.3 lbs	12.8" x 4.8" x 4.8"
PA-TA-R5	9.9 lbs	1	10.2 lbs	12.8" x 6.0" x 6.0"
PA-TA-S4	3.8 lbs	1	3.9 lbs	8.3" x 5.3" x 5.3"
PA-TA-S5	4.5 lbs	1	4.7 lbs	8.3" x 6.3" x 6.3"

BULLHORNS

Pair any Bullhorn with any Tenon Adaptor to fit 3", 4", and 5" poles!

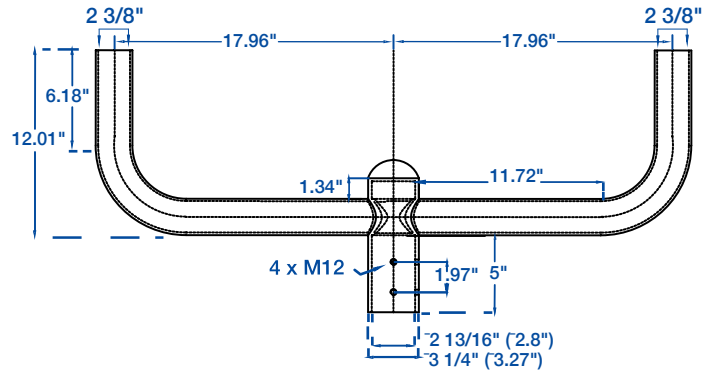


2-Head, In-line

PA-BH-I2-BK

PA-BH-I2-BZ

Max. Load: 46.3 lbs



Product #	Unit Weight	Carton Quantity	Carton Weight	Carton Dimensions
PA-BH-I2	15.8 lbs	1	20.7 lbs	41.9" x 20.6" x 7.2"

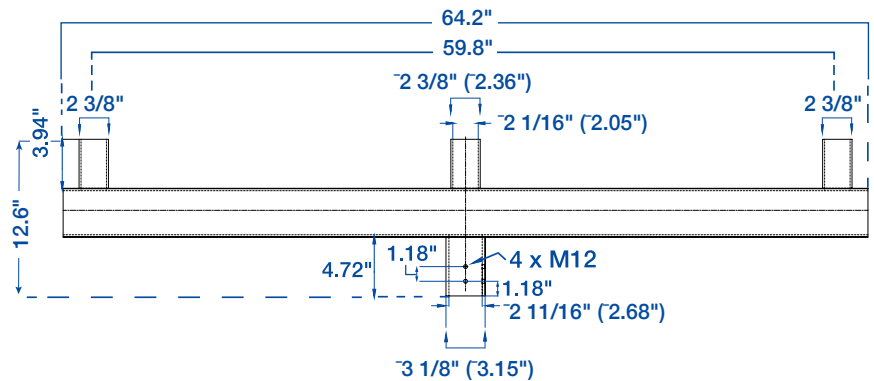


3-Head, In-line

PA-BH-I3-BK

PA-BH-I3-BZ

Max. Load: 69.4 lbs



Product #	Unit Weight	Carton Quantity	Carton Weight	Carton Dimensions
PA-BH-I3	43.4 lbs	1	47.7 lbs	66.7" x 14.2" x 5.8"