



Meet the Ultra-Versatile

FLEX

FL05 AREA LIGHTS

Power and Colour Selectable

120-347V Universal Driver

0-10V Dimmable

Field-Interchangeable Optics

Area lighting has never been easier with all the features you will ever need in one sleek, attractive package. These rugged die-cast aluminium fixtures are photocell and sensor compatible, stocked in bronze, black, and white for quick shipping!

FL05 AREA LIGHTS

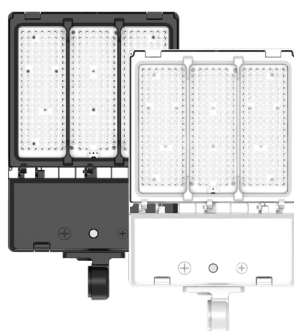
DarkSky approved when set to 3000K operation and used with a Fixed Mount

WHAT MAKES THE FL05 SO GREAT!

The new ultra-versatile FL05 Flex Series Area lights from CSC LED provide the desired flexibility and ease of installation not found in most other Area lights on the market.

With quick release latches for the driver compartment and field-interchangeable optics, installation and modifications are faster than ever before! You can now connect the fixture to the correct voltage and adjust the wattage; and colour temperature! With 0-10V dimming, take advantage the widest range of configurations, all without the need for ordering specific options.

Feel confident that even after installation, you can take advantage of the wide range of adjustments to suit your lighting needs and preferences. Now that's peace of mind!



Pictured: 100W - 150W Models



Pictured: 240W - 300W Models

All Models Available in Black (BK) and Bronze (BZ)*
150W and 300W models available in white (WH)

Power Selectable

60W / 80W / 100W
100W / 125W / 150W
180W / 210W / 240W
260W / 280W / 300W
350W / 400W / 450W

Colour Selectable

3000K / 4000K / 5000K

120-347V Universal Driver

with 0-10V dimming

Rugged Die-Cast Aluminum Housing

Photocell & Sensor Compatible

Quick Release Latched Doors

for easy access to driver housing and lens frame

Easy Field-Interchangeable Optics (Sold Separately)



For information on the complete series including IES files, spec sheets, and more, visit www.csc-led.com

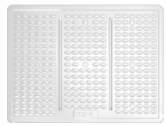
*450W model only available in bronze



Check out our YouTube channel for more information on our products!

ACCESSORIES & MOUNTS

Accessories to meet your projects every need (sold separately).
All Mounts, Visors, & Slip Fitters are available in Black (BK), Bronze (BZ), and White (WH).



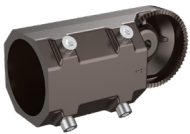
Optics



Motion Sensors



Visor



Slip Fitter



Fixed Mount



Trunnion Mount



Yoke Mount



Pole Mount



Multi Mount

See reverse for product codes, sizing, and accessory details.



FL05 FLEX Area Light shown with the hinged optic plate open

Lumen Output Tables

and Product Numbers

FL05-100W-3P-3CCT-UD			
	3000K	4000K	5000K
60W	8825 lm	9167 lm	9216 lm
80W	11228 lm	11913 lm	11748 lm
100W	13306 lm	14865 lm	14483 lm
FL05-150W-3P-3CCT-UD			
	3000K	4000K	5000K
100W	13838 lm	14839 lm	14442 lm
125W	16320 lm	17789 lm	17121 lm
150W	19056 lm	20618 lm	19583 lm
FL05-240W-3P-3CCT-UD			
	3000K	4000K	5000K
180W	25604 lm	27260 lm	26639 lm
210W	28410 lm	30620 lm	29739 lm
240W	31092 lm	34576 lm	33324 lm
FL05-300W-3P-3CCT-UD			
	3000K	4000K	5000K
260W	33987 lm	37011 lm	35511 lm
280W	36064 lm	39358 lm	37538 lm
300W	38176 lm	40953 lm	38923 lm
FL05-450W-3P-3CCT-UD			
	3000K	4000K	5000K
350W	44114 lm	48875 lm	46041 lm
400W	49339 lm	54918 lm	53133 lm
450W	54397 lm	61020 lm	58581 lm



Fixtures	Finish Colour	Wattage	CCT	Voltage	Lumens	Efficacy
FL05-100W-3P-3CCT-UD-BZ	Bronze	60W / 80W / 100W	3000K / 4000K / 5000K	120-347V	13306 lm	133 lm/W
FL05-100W-3P-3CCT-UD-BK	Black					
FL05-150W-3P-3CCT-UD-BZ	Bronze	100W / 125W / 150W	3000K / 4000K / 5000K	120-347V	19056 lm	127 lm/W
FL05-150W-3P-3CCT-UD-BK	Black					
FL05-150W-3P-3CCT-UD-WH	White					
FL05-240W-3P-3CCT-UD-BZ	Bronze	180W / 210W / 240W	3000K / 4000K / 5000K	120-347V	31092 lm	130 lm/W
FL05-240W-3P-3CCT-UD-BK	Black					
FL05-300W-3P-3CCT-UD-BZ	Bronze	260W / 280W / 300W	3000K / 4000K / 5000K	120-347V	38176 lm	127 lm/W
FL05-300W-3P-3CCT-UD-BK	Black					
FL05-300W-3P-3CCT-UD-WH	White					
FL05-450W-3P-3CCT-UD-BZ	Bronze	350W / 400W / 450W	3000K / 4000K / 5000K	120-347V	54397 lm	121 lm/W
Accessories	Finish Colour	Description				
FL-SF01-XX*	BZ / BK / WH	Slip Fitter for FL05 FLEX Area Lights				
FL-PM01-XX*	BZ / BK / WH	Pole Mount for FL05 FLEX Area Lights				
FL-TR01-XX*	BZ / BK / WH	Trunnion Mount for FL05 FLEX Area Lights				
FL-MM01-XX*	BZ / BK / WH	Multi Mount for FL05 FLEX Area Lights				
FL-FM01-XX*	BZ / BK / WH	Fixed Mount for FL05 FLEX Area Lights				
FL-YM01-SM-XX*	BZ / BK / WH	Yoke Mount for FL05 FLEX Area Light 100W-150W models				
FL-YM01-LG-XX*	BZ / BK / WH	Yoke Mount for FL05 FLEX Area Light 240W-300W models				
FL-YM01-XL-BZ	Bronze	Yoke Mount for FL05 FLEX Area Light 450W model				
FL-VISOR01-SM-XX*	BZ / BK / WH	Visor for FL05 FLEX Area Light 100W-150W models				
FL-VISOR01-LG-XX*	BZ / BK / WH	Visor for FL05 FLEX Area Light 240W-300W models				
FL-VISOR01-XL-BZ	Bronze	Visor for FL05 FLEX Area Light 450W model				
FL-TYPE-II-SM	N/A	Type II Optics for FL05 FLEX Area Light 100W-150W models				
FL-TYPE-II-LG	N/A	Type II Optics for FL05 FLEX Area Light 240W-300W models				
FL-TYPE-II-XL	N/A	Type II Optics for FL05 FLEX Area Light 450W model				
FL-TYPE-IV-SM	N/A	Type IV Optics for FL05 FLEX Area Light 100W-150W models				
FL-TYPE-IV-LG	N/A	Type IV Optics for FL05 FLEX Area Light 240W-300W models				
FL-TYPE-IV-XL	N/A	Type IV Optics for FL05 FLEX Area Light 450W model				
FL-TYPE-V-SM	N/A	Type V Optics for FL05 FLEX Area Light 100W-150W models				
FL-TYPE-V-LG	N/A	Type V Optics for FL05 FLEX Area Light 240W-300W models				
FL-TYPE-V-XL	N/A	Type V Optics for FL05 FLEX Area Light 450W model				
MS01-PIR-TW-DC	N/A	Infrared Motion Sensor				
MS04-MW-TW-DC	N/A	Microwave Motion Sensor				
MS04-RC	N/A	Remote REQUIRED for MS04-MW-TW-DC and MS01-PIR-TW-DC				
JL-200	N/A	Photocell Receptacle (Photocell Receptable is REQUIRED for use with Photocell)				
JL-205LV	N/A	Photocell (120-277V)				
JL-207E	N/A	Photocell (347V)				
JL-208	N/A	Shorting Cap				

HEAD OFFICE: 8 - 540 Jamieson Pkwy, Cambridge, ON, N3C 0G5 | orders@csc-led.com | (519) 880 - 9833



ALBERTA WAREHOUSE
13 - 2355 52 Ave SE, Calgary, AB, T2C 4X7
ordersbc@csc-led.com | (403) 907 - 0212

BRITISH COLUMBIA OFFICE
1140 - 2375 Fremont Street, Port Coquitlam, BC, V3B 0N9
ordersbc@csc-led.com | (778) 730 - 0448