



SS02 Series

SECURITY LIGHTS

Improve Home Security and Illuminate Your Outdoor Space

SS02 SECURITY LIGHTS

MOTION-ACTIVATED LIGHTING



KEY FEATURES

Power Selectable

16W / 25W

5CCT Selectable

2700K / 3000K / 3500K / 4000K / 5000K

120V Driver

180° Motion Detection Range

Integrated Visor Shields

to reduce glare and light trespass

2-Head Lamps

swivel arm design allows directional lighting

3 Operating Modes:

Dusk to Dawn, On/Off,
Dusk to Dawn + Motion

Available in Matte Black and Matte White Finishes

2 Brightness Levels

2200 lm or 1470 lm



INCREASE HOME SECURITY

Shine a light on your home's outdoor security with SS02 Security Lights! With 2-Head Lamps on swivel arms, multiple operating modes and brightness settings the SS02 Security Lights offers automated functionality, ensuring hassle-free operation from dusk till dawn. The perfect motion-sensor security lighting for your property!

SECURITY LIGHTS

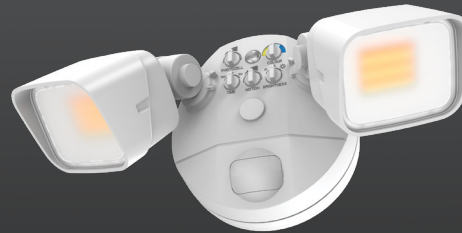
Dependable outdoor lighting with built-in flexibility. Choose from multiple modes and brightness settings to match the right level of light for driveways, walkways, entryways, and other outdoor spaces.

SS02 Security Lights

Fixtures	Wattage		CCT	Voltage	Efficacy	Lumens	Finish
SS02-25W-2P-5CCT-BK	25W	2700K / 3000K / 3500K / 4000K / 5000K		120V	92 lm/W	2200 lm	Matte Black
SS02-25W-2P-5CCT-WH	25W	2700K / 3000K / 3500K / 4000K / 5000K		120V	92 lm/W	2200 lm	Matte White



SS02 25W Security Light
SS02-25W-2P-5CCT-BK



SS02 25W Security Light
SS02-25W-2P-5CCT-WH

Lumen Output Tables



SS02-25W-2P-5CCT-BK / SS02-25W-2P-5CCT-WH

	2700K		3000K		3500K		4000K		5000K	
	Lumen	Efficacy	Lumen	Efficacy	Lumen	Efficacy	Lumen	Efficacy	Lumen	Efficacy
16W	1365 lm	88 lm/W	1420 lm	91 lm/W	1459 lm	93 lm/W	1476 lm	95 lm/W	1471 lm	95 lm/W
25W	2002 lm	85 lm/W	2100 lm	89 lm/W	2176 lm	92 lm/W	2208 lm	94 lm/W	2218 lm	95 lm/W



For information on the complete series including IES files, spec sheets, and more, visit www.csc-led.com



BC BRANCH

1140-2375 Fremont St
Port Coquitlam, BC V3B 0N9
(778) 730-0448

AB BRANCH

13-2355 52 Ave SE
Calgary, AB T2C 4X7
(403) 907-0212

ON HEAD OFFICE

8-540 Jamieson Pkwy
Cambridge, ON N3C 0G5
(519) 880-9833